



# Weekender

February 27, 2025

## What is Chronic Wasting Disease (CWD)

What is CWD	1
HOA Dues and Assessments	2
Meet our Deputy	3
Next Board Mtg AMS / HOA Chair Yoga	4
Compactor Information	5
Mattress Fundraiser	6
Ilwaco HS Music Concert	7
Food and Inflammation Workshop	8
National Quilt Day	9
Chowder Cook Off	10
Ring Class	11
ARC Committee	12
February Calander	13
March Calendar	14

- We all love our wildlife here in Surfside! It's joyful to watch the deer, birds, geese and ducks and other creatures. Even though most people know that it's not a good idea to feed them, it's still being done. We like to help protect our wildlife and not endanger it. This is why we like to take a minute and inform you about the danger of CWD
- CWD is always fatal and can be found in most deer species, including elk, reindeer, moose, mule, red and white-tailed deer
- CWD is a slow-spreading disease that takes one to two years to kill an infected deer, so it does not destroy deer populations in dramatic fashion.
- The slow-building attack camouflages CWD's seriousness and makes it difficult for people to see and accept the risk.
- Contagions spread through urine, feces, saliva, blood, semen, deer parts, and especially via live deer. Importantly, there is no vaccine or cure.
- CWD's impacts are difficult to see on the landscape now or won't become serious for many years in most areas, therefore it is easy for some to dismiss or disregard the danger.
- For more information, please read the article published by the CDC and the National Deer Association
- [About Chronic Wasting Disease \(CWD\) | CWD | CDC](#)
- [Chronic Wasting Disease \(CWD\) Resource Center | National Deer Association](#)

## REMINDER

**2025 HOA Membership Dues and Assessments are due  
TOMORROW, FEBRUARY 28**

**Members can still pay at the Surfside HOA Office by check,  
cash or Credit Card.**

**Office Hours are Monday—Friday from 8:30am-4pm**

**IF YOU ARE UNABLE TO PAY THE FULL AMOUNT OF YOUR  
DUES AND ASSESSMENTS BY THE END OF FEBRUARY,  
YOU NEED TO MAKE A PAYMENT PLAN.**

**PLEASE CALL THE SURFSIDE HOA OFFICE FOR ASSISTANCE  
OR CONTACT AMS.**

**WE ARE HERE TO ASSIST YOU!**

**PLEASE CALL SURFSIDE HOA OFFICE 360.665.4171  
OR AMS 503.858.1222**

**Deputy Mike Ray** has been on patrol since February 1st, keeping the streets of Surfside safe. Please remember that **if you have an emergency or are in need of police assistance, call 911.**

**The Surfside business office is not responsible for dispatching the deputy.**

The Community Relations  
Committee invites you to a  
**MEET & GREET**

**Deputy Michael Ray,  
dedicated deputy for  
Surfside HOA  
Saturday, March 1, 2025  
@ 11am in the HOA  
boardroom**

Coffee and refreshments!

**FOR INFORMATION CALL 360-  
665-4171 OR EMAIL  
OFFICE@SURFSIDEONLINE.ORG**



## Board and Committee Meetings

### Next Board Meeting: March 15

To find the meeting links for Board Meetings and Committee Meetings just visit the website, by clicking [here](#). If you have any questions, just give us a call at 360.665.4171

## Message from the Surfside HOA Office

Please note that there is some misinformation floating around.

AMS-NW, Association Management Services NW is **NOT** your Homeowner Association. They do not replace the Surfside Homeowner Association.

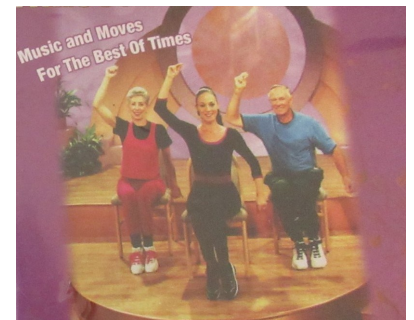
AMS performs back-office support, they are sending out monthly statements and assist with payment transactions.

Please do not visit their office in Vancouver for any HOA questions.

For payments, you can either use your AMS portal, send checks to the address referenced by AMS or you can come to the Surfside HOA Office to pay with cash, check or Credit Card. You can also call the Surfside HOA Office and pay over the phone.

## Chair Yoga and Stretching

All winter/spring classes are cancelled  
New classes starting in November 2025



# SURFSIDE HOMEOWNERS ASSOCIATION INFO

Surfside Homeowners Association

## Compactor Drop Box

**PLEASE DON'T....**

- NO TOOLS, NO TIRES,  
NO AUTO PARTS
- NO FURNITURE, NO CARPETS,  
NO DOG BEDS
- NO CONSTRUCTION OR  
REMODELING REFUSE
- NO YARD DEBRIS  
OF ANY KIND
- NO HAZARDOUS WASTE,  
PAINTS, OIL OR GAS
- NO APPLIANCES, NO  
MATTRESSES, NO PILLOWS
- NO EXTENSION CORDS, NO ELECTRIC  
WIRING, NO ELECTRONICS

## NO BIOHAZARD

If you need to dispose of medical waste, needles, syringes or injector pens, please get an appropriate container and take to the local pharmacy, they have a drop-box available.

**DO NOT THROW IN YOUR KITCHEN  
GARBAGE AND DISPOSE IN SURF-  
SIDE COMPACTOR DROP BOX**



A current compactor pass is **required** to use the site. Please ensure your guests and/or renters use your pass.





**ILWACO HS/HILLTOP MS MUSIC**

**MATTRESS  
FUNDRAISER**



**SAT MARCH 1, 2025  
10AM - 4PM  
@ HILLTOP MS**

- BRAND NEW, BRAND NAME
- MADE TO ORDER
- ALL SIZES AND FEELS
- FINANCING AVAILABLE
- DELIVERY OPTIONS

**SAVE THE DATE AND SPREAD THE WORD**



**MATTRESSES, ADJUSTABLE BASES, PILLOWS, SHEETS, PROTECTORS AND MORE**

**WWW.CFSBEDS.COM**





ILWACO HIGH SCHOOL  
PRESENTS  
*Music Concert at*  
**LIBERTY THEATER**



*Mariachi Oro y Azul*



*Percussion Ensemble*



*Mariachi Pescador*



*Concert Band*



*Jazz Band*



*Choir*

**March 5**

**from 7 - 9 PM**

**doors open at 6:30**

**Liberty Theater**

**1203 Commercial St**

**Astoria, OR**

**Free Admission**



# Food and Inflammation



Do you suffer from arthritis? Joint pain? Fibromyalgia? Swelling? Sports injuries? If so, then this class is for you! Join us for an informative and interactive workshop on strategies for managing these conditions through diet.

**Free workshop!**

**Drop ins are welcome!**



Ocean Beach Hospital  
 Ilwaco: (360) 642-3181  
 Ocean Beach Wellness Center  
 Ilwaco: (360) 642-6328  
 Ocean Beach Medical Clinics  
 Ilwaco: (360) 642-3747  
 Ocean Park: (360) 642-6387  
 Naselle: (360) 484-7161

Led by OBH Nutritionist **Andy Lakanen**

Clinical Dietitian & Diabetes Educator



**Wednesday March 12, 1:00-2:00 pm**

**Peninsula Senior Center**

**21603 O Lane, Ocean Park WA**

[oceanbeachhospital.com](http://oceanbeachhospital.com)

*Providing quality, compassionate care close to home.*





## **National Quilt Day**

**Sat – 3-15-25 from 9am to 11am**

**Events include:**

- \*Assembling a Quilt**
- \* Come enjoy coffee, cookies and fellowship**
- \*We are also looking for volunteers**

**Location:**

**Ocean Park Lutheran Church**

**24002 U Street, Ocean Park, WA 98640**

**360-665-6344**



**SURFSIDE HOA COMMUNITY  
RELATIONS INVITES YOU TO  
A**

## **Seafood Chowder Cookoff**

**RAFFLE & BAKE SALE**

**Saturday, March 22, 2025**

**at Oysterville School**

**Oysterville WA**

**Tasting: Noon to 2pm**

**Awards: 2:15pm**

**PRIZES FOR TOP 3 POTS**

**Free to enter your minimum 6 qt. Of  
Chowder with pre-registration!  
Entries delivered by 11:30-11:45am**

**\$5.00**

**TO TASTE AND VOTE WITH A NON  
PERISHABLE FOOD DONATION  
PROCEEDS GO TO OCEAN PARK  
FOOD BANK**

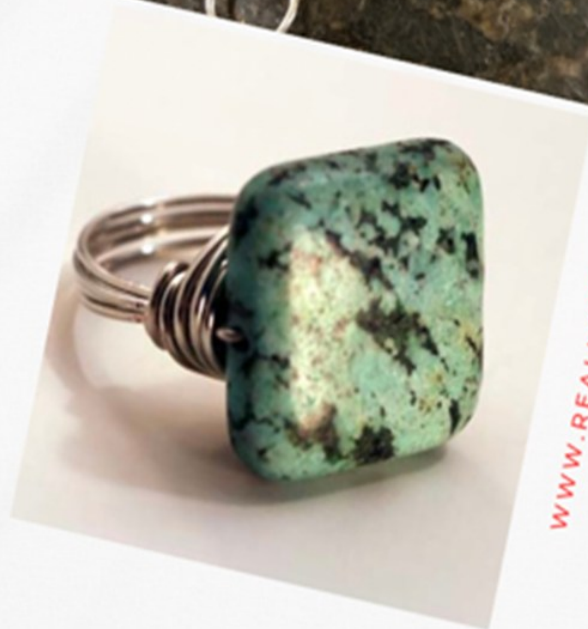
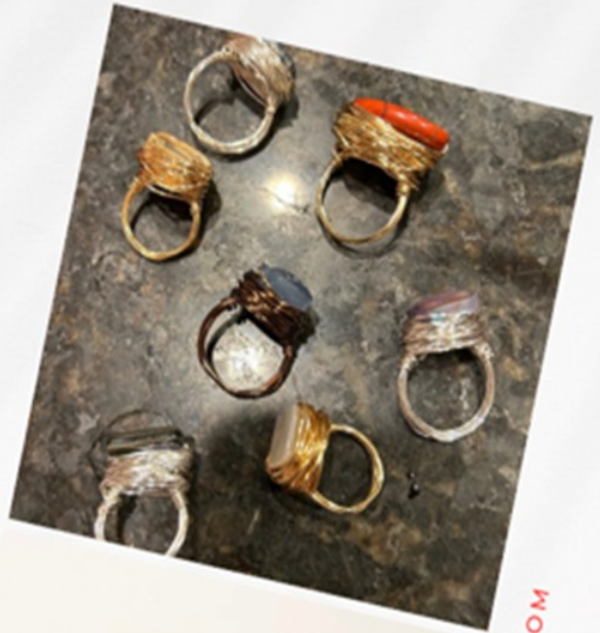
**Call 360-665-4171 or email:  
office@surfsideonline.org to  
pre register your chowder**



**Save the date for this new and exiting class  
Call the HOA Office to register**

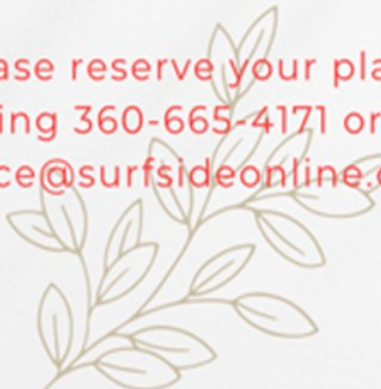
**SURFSIDE COMMUNITY RELATIONS OFFERS**

Ring making by  
Forge + Fire  
March 29, 2025 @  
10am in the Surfside  
boardroom!  
\$20 for  
members/\$45 for  
guesis



[WWW.REALLYGREATSITE.COM](http://WWW.REALLYGREATSITE.COM)

Please reserve your place by  
calling 360-665-4171 or email  
[office@surfsideonline.org](mailto:office@surfsideonline.org)





# ARCHITECTURAL COMMITTEE

Plan on installing a fence, a shed, a gazebo or building a garage or a house?

REMINDER...

ALL building plans must be submitted to the Architectural Committee prior to any construction.

*Pacific County will not approve permitting until the committee has signed off on all plans.*

The committee meets every Tuesdays at 9 a.m. at the business office. **The plans MUST be submitted by Friday at noon to be added to the next week's agenda.** The building packets are on our website at [surfsideonline.org/forms/](http://surfsideonline.org/forms/) or you can pick them up from the business office.

Please notify the business office if you want to attend the meeting in person.


**If you are building on a vacant lot without an address, please post a sign so the committee knows which lot will be developed.**

**Two (2) sets of plot plans must be submitted to the committee.** Once approved, you will get a copy of the approved plan. Take it to the county for their approval as needed. Surfside will retain one set of approved plans to keep on file.

For more detailed information on the Architectural Committee duties and guidelines go to our website [surfsideonline.org](http://surfsideonline.org), select the Other tab, then Governing Documents. Download the Operations Manual and the Surfside Restrictive Covenants or call the business office 360-665-4171 with questions.

Thank you!

# February 2025

SUN	MON	TUES	WED	THURS	FRI	SAT
						1
2	3	4 AC 9 am CRC 1 pm	5	6	7 TBVN 1 pm Book Club 3PM	8 Chair Yoga & Stretching 2pm
9	10	11 AC 9 am	12	13	14 Happy Valentine's 	15 Regular Board Meeting 9 am Chair Yoga & Stretching 2pm
16	17 <i>Presidents Day, Office Closed</i>	18 AC 9 am	19	20 S&S 3 pm	21	22 Chair Yoga & Stretching 2pm
23	24	25 AC 9 am EMC 1 pm	26	27	28	

## LEGEND


AC=Architectural    CRC=Community Relations    EMC=Emergency Management

LBW=Land, Buildings and Waterways    SS=Safety and Security

TBVN=Tree, Brush, Vegetation and Noxious Weeds    WSP=Water Systems Planning

HR= Human Resources Committee

# March 2025

SUN	MON	TUES	WED	THURS	FRI	SAT
						1 Deputy Ray 11pm
2 Private Party Noon-4 pm	3	4 ARC 9am CRC 1:15 pm	5	6 LBW 9 am WSP 11 am	7 TBVN 130p	8
9	10	11 ARC 9am	12 RV 10am	13	14	15 Regular Board Mtg 9am
16	17 St. Patrick's Day 	18 ARC 9am	19	20 S&S 3pm	21	22
23 _____	24 _____	25 ARC 9am EMC 1pm	26	27	28	29
30	31					

## LEGEND

ARC=Architectural    CRC=Community Relations    EMC=Emergency Management

LBW=Land, Buildings and Waterways    SS=Safety and Security

TBVN=Tree, Brush, Vegetation and Noxious Weeds    WSP=Water Systems Planning